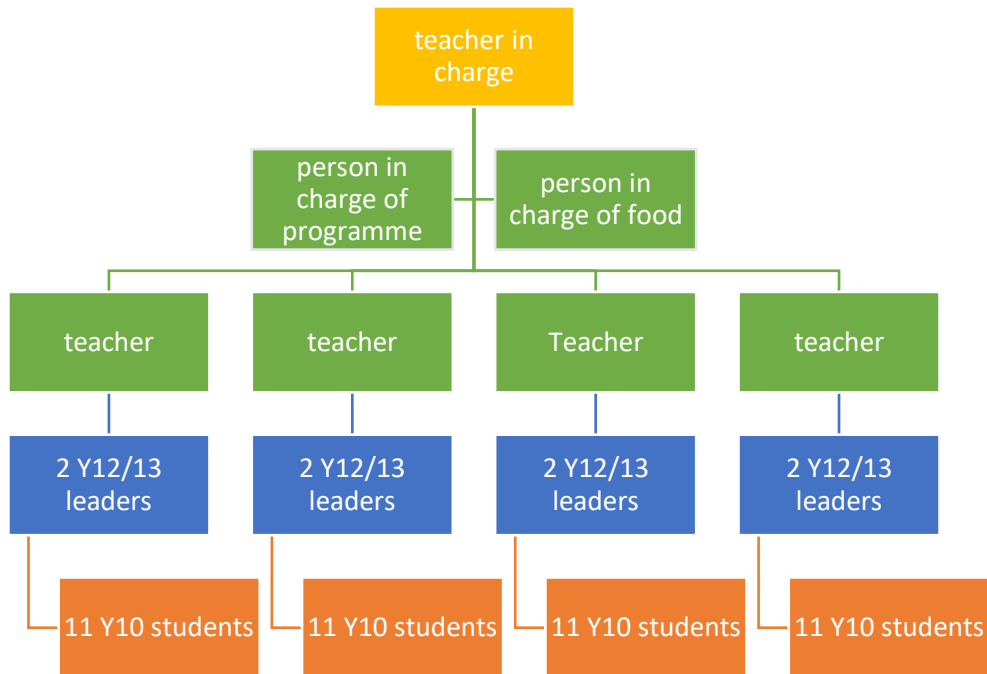


Supervision structures – Y10 Camp 2018

45 Y10s operating in 4 groups

Base structure throughout camp

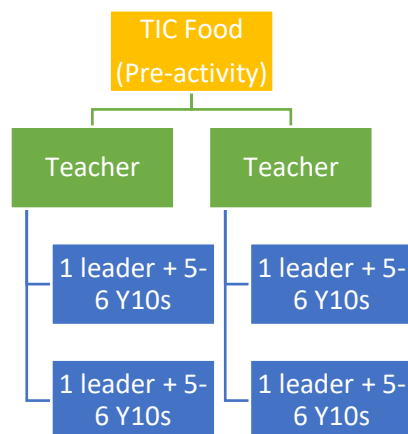
4 groups of 11 Y9 students with 2 Y13 leaders and one teacher



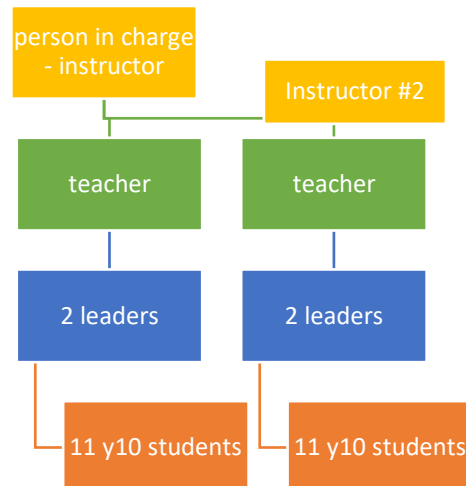
This is the basic unit structure that we base all other groupings and supervision on

Person in charge of food and TIC may be the same person. For this to be manageable and effective the menu should be quite simple and preparation/cooking/clean up be done by students (overseen by their leaders) in a duty roster.

Overnight camping meal to be set up as a self-cook exercise (e.g. as a Master Chef competition or a set simple meal to prepare and cook outside over gas cookers in sub-groups of 5-6, one leader with each group)



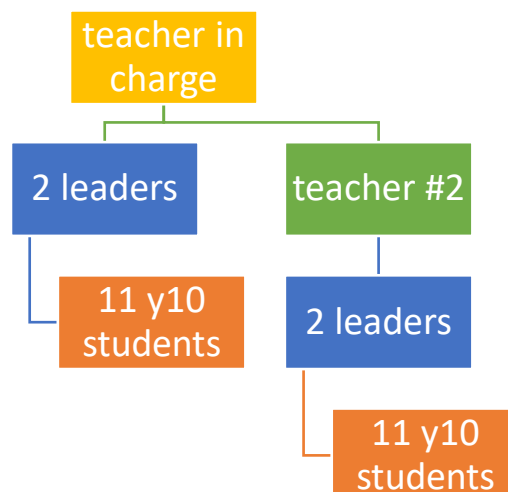
For caving or canyoning



Teachers and leaders need to follow the supervision structure and instructions of the caving or canyoning instructors

However, teachers retain overall responsibility for students on behalf of the school. Any concern with how an activity is being run by instructors should be discussed with the instructor and if the response is not satisfactory, call a stop to the activity

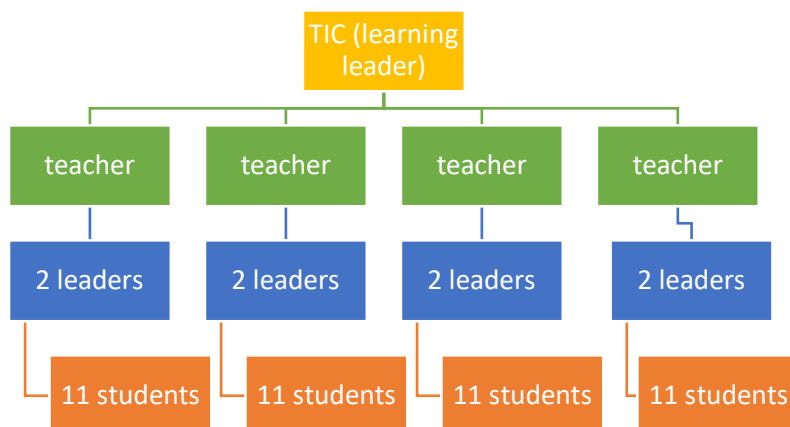
For Bush craft - Tramping



Bush craft and Tramping is led by school staff with competence for their role. TIC should know the track and have experience leading groups in bush environments. Teacher #2 supports TIC and ideally has some experience of bush craft and tramping.

Leaders are likely to have had experience in tramping and bush craft gained as part of their outdoor education studies

Curriculum linked activities Rotation – morning Day 2)



Teachers when in an activity leadership role, need to be confident and competent in their role. Hence, we may need to have teachers stay on an activity. This needs to be decided in planning so that all teachers know the activity they are leading inside out

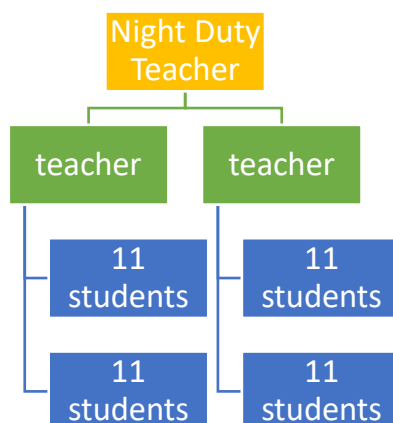
Leaders move with their group through the rotation.

TIC oversees movement of groups – timing and rotation order; supports teachers as required

Day 1 Group ABL games session.

In this case leaders facilitate the activities with their teacher supporting with any behaviour management/help with facilitation if required

Night time supervision (i.e. once students sent to bed)



Leaders can help to get students settled at night, then they need their sleep and teachers take over supervision

It is helpful to have students sleeping in tents/bunkrooms with members of their group and then either their tents being close together with a leader's tent pitched close by or leaders sleep in bunkrooms with their group. (Bunkroom size at Raglan may make this difficult)

Leaders can quickly ascertain where their group members are and whenever required organise them to be where they should be

If students are randomly in tents/bunkrooms these tasks are inefficient and time consuming.